



Elwha River Restoration Project Update July 25, 2014

**SAC Meeting
Port Angeles, Washington**

Olympic National Park





Browser address bar: <http://video-monitoring.com/construction/olympic/silver.htm?img=?&station=Gline>

Browser tabs: (ELWW1) ELWHA--AT MC..., USGS Current Conditions f..., Elwha River Restoration...

Navigation: File Edit View Favorites Tools Help

Links: InsideNPS NPS Help Desk Suggested Sites Web Slice Gallery Welcome to eCPIC

Elwha River Restoration Project [visit the main web page](#)

08:03:53 - 24 July 2014

Calendar

July, 2014

Su	Mo	Tu	We	Th	Fr	Sa
29	30	1	2	3	4	5
6	7	8	9	10	11	12
13	14	15	16	17	18	19
20	21	22	23	24		

Image Tools

Zoom: 87%

Playback Controls

Navigation buttons: Previous, Play/Pause, Next

High Quality ☐ Fast

Compare ☐

Show Images: All

FS Save Mail About

26828/26828

Olympic National Park



Olympic National Park



Nov 21 11 15:34:35



Olympic National Park



Oct 17 12 12:03:40

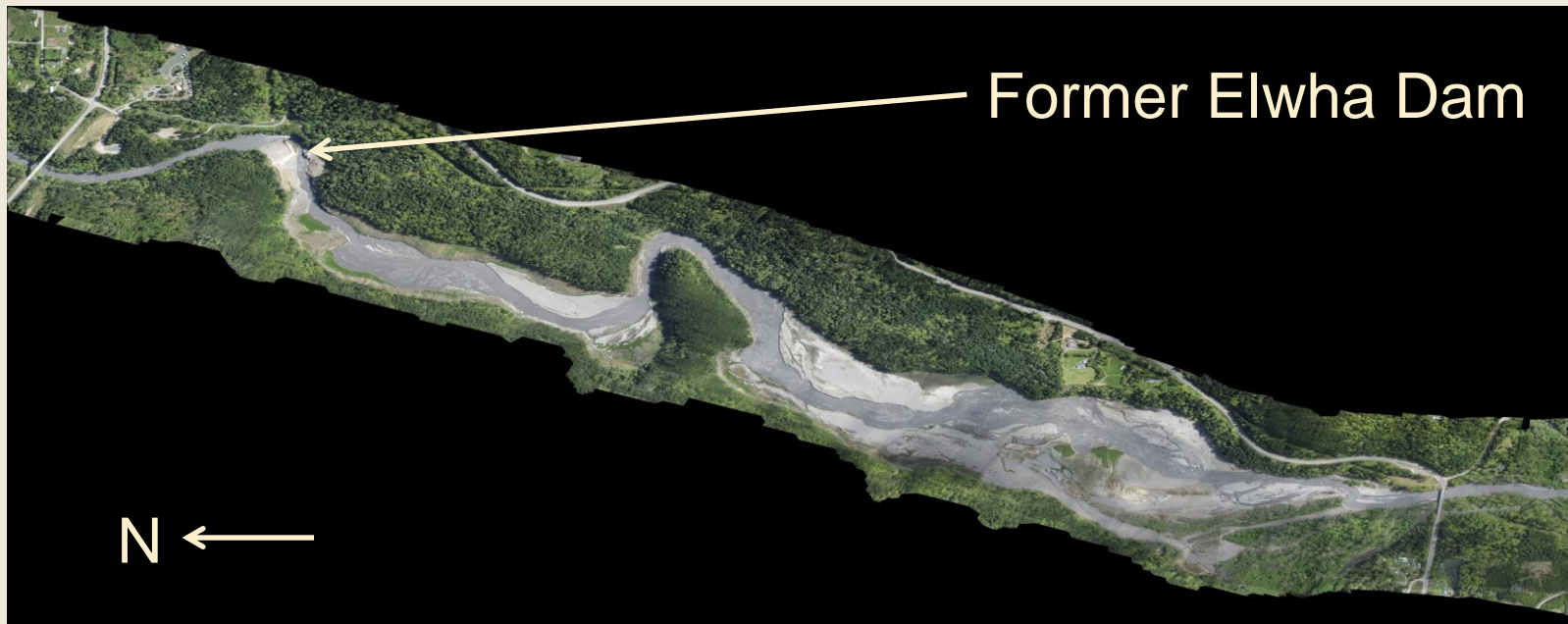


Olympic National Park

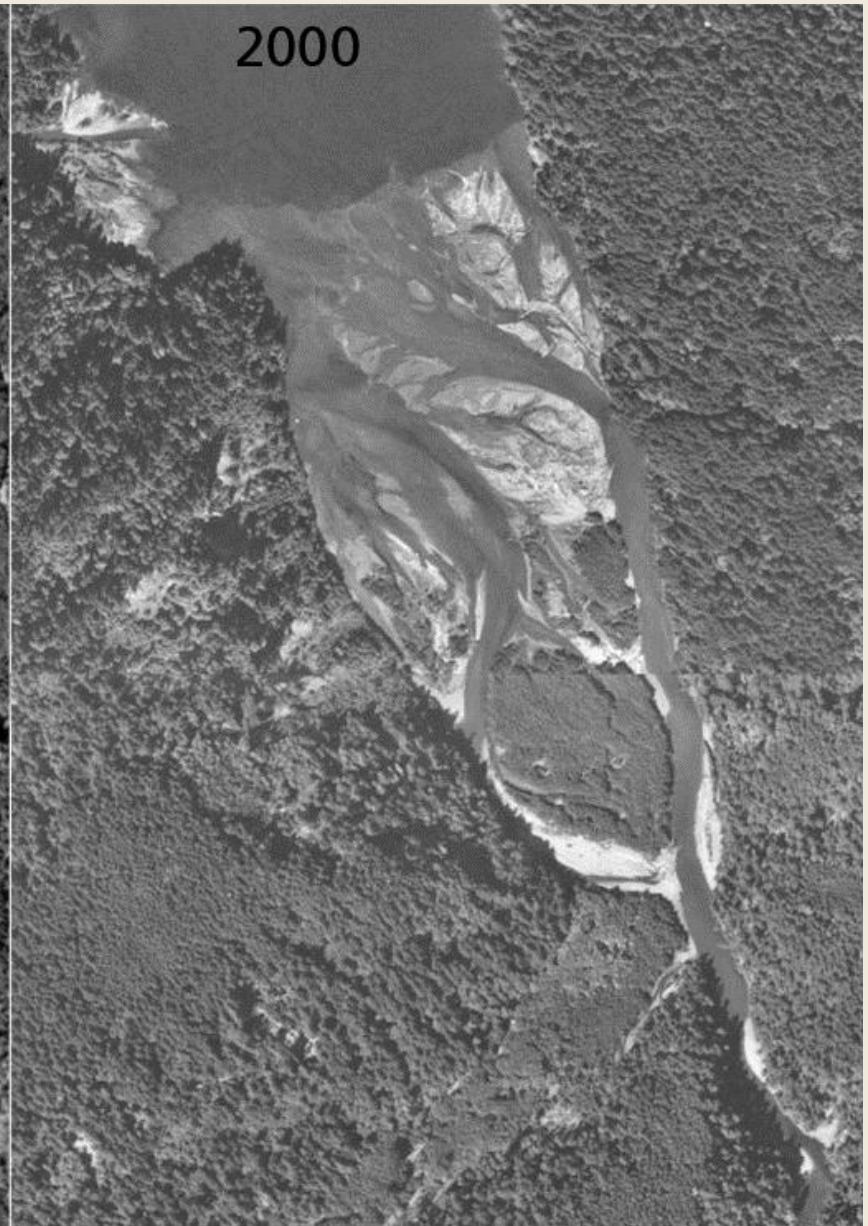


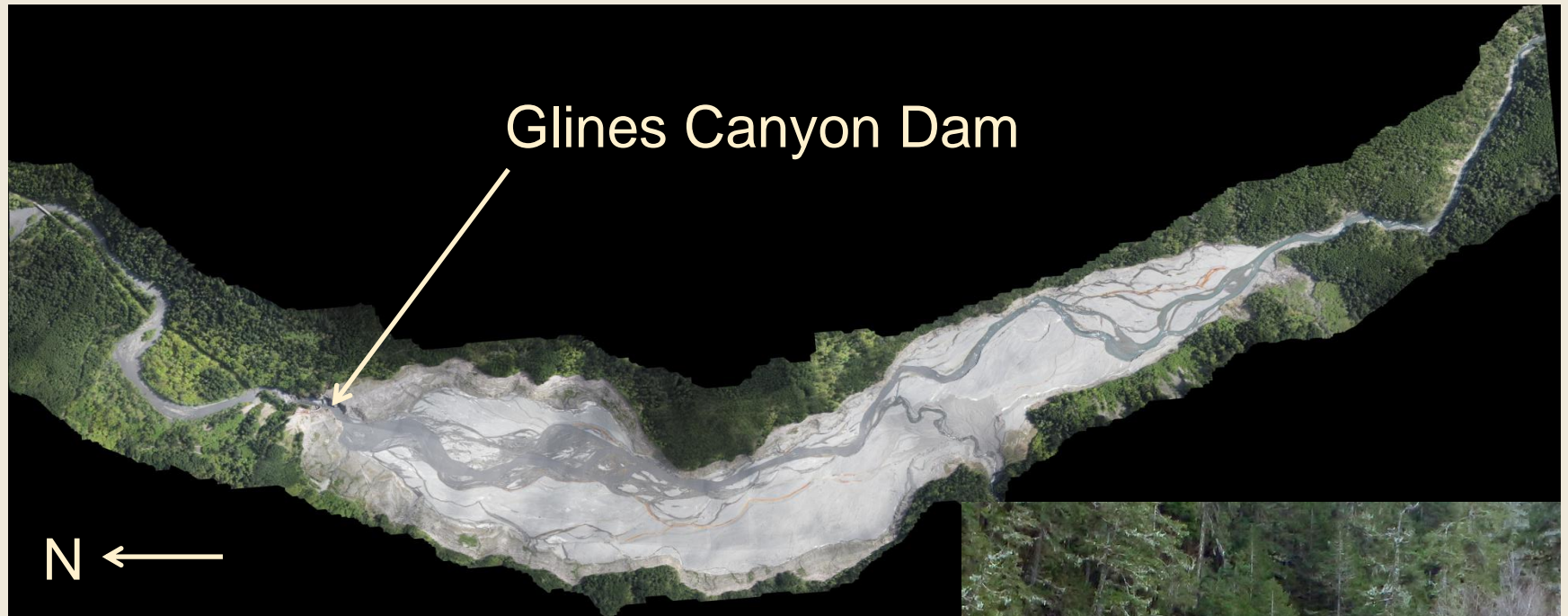


Former Lake Aldwell



Olympic National Park





Former Lake Mills



Estimated Total Sediment: 27 million cubic yards \pm 4 million cubic yards

Lake Mills Sediment:

- 21.1 million yd³
- $\frac{1}{2}$ clay and silt
- $\frac{1}{2}$ sand and gravel

Lake Aldwell Sediment:

- 6.4 million yd³
- $\frac{2}{3}$ clay and silt
- $\frac{1}{3}$ sand and gravel





Sediment Management Plan

- Remove both dams in controlled increments and allow the river to erode a portion of the reservoir sediments to the sea.
- Rate of dam removal was designed to be fast enough to limit impacts to a few year classes of fish, but slow enough that downstream impacts can be tolerated.



So far, 12.2 ± 0.1 million cubic yards has been eroded through July 2014.

In Lake Mills, 10.2 million cubic yards net erosion.

In Lake Aldwell, 2.0 million cubic yards since September 2011.

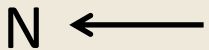


Elwha Water Treatment Plant

Elwha Surface
Water Intake



Former Elwha Dam



Elwha Water Facilities

Elwha Surface Water Intake



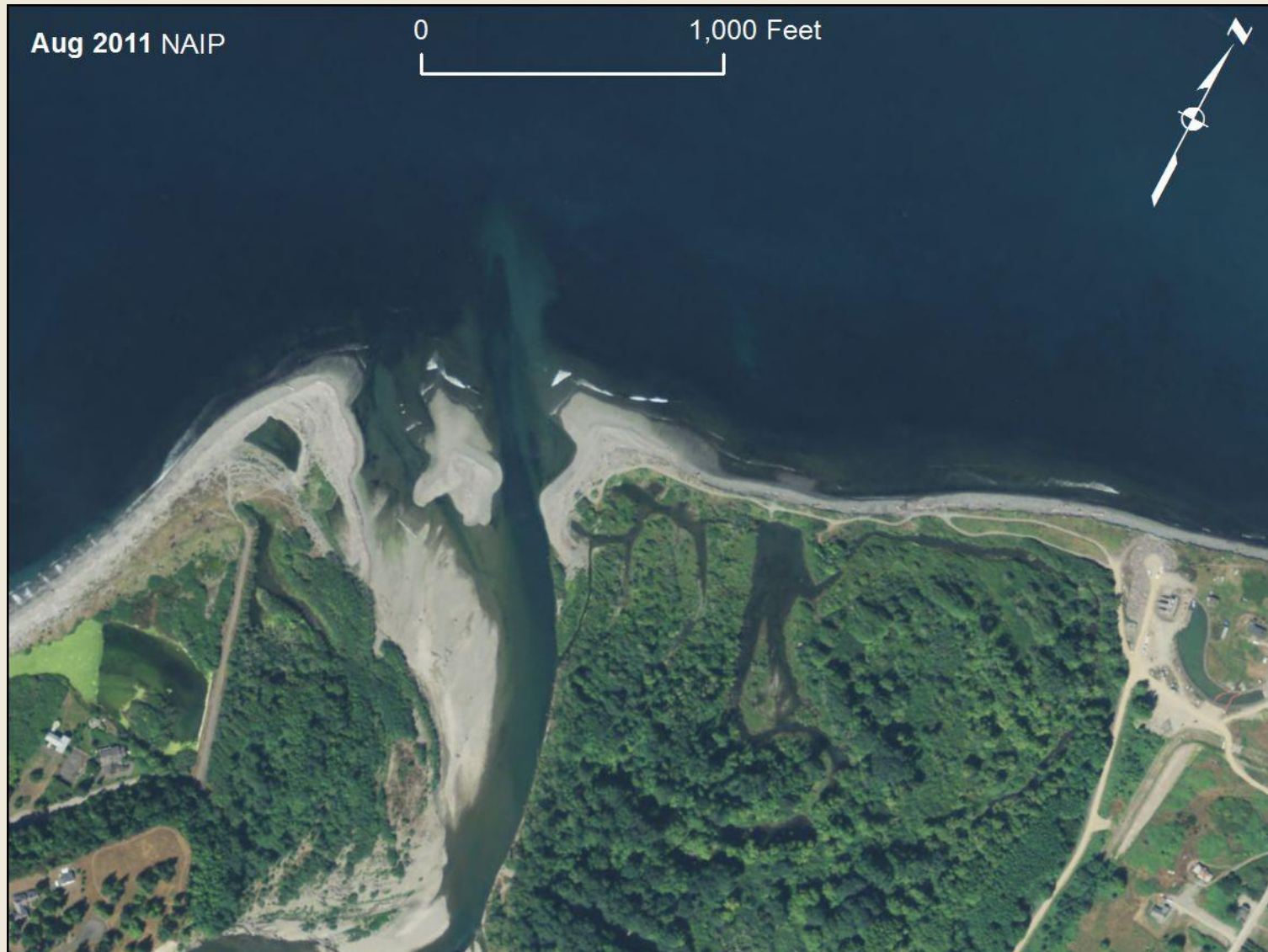
Elwha Water Treatment Plant



Olympic National Park



Olympic National Park



Olympic National Park



7 August 2013 Elwha River Mouth Tom Roorda and CWI ©

Olympic National Park



21 August 2013 Elwha River mouth Tom Roorda and CWI ©

Elwha nearshore 1 July 2014
Tom Roorda
and CWI. © All Rights Reserved.





Thank you!

