

Maritime Washington National Heritage Area



Rob Whitlam, Ph.D.
State Archaeologist

Archaeological and Historic Sites, Ships and Shipwrecks, & Traditional Cultural Places



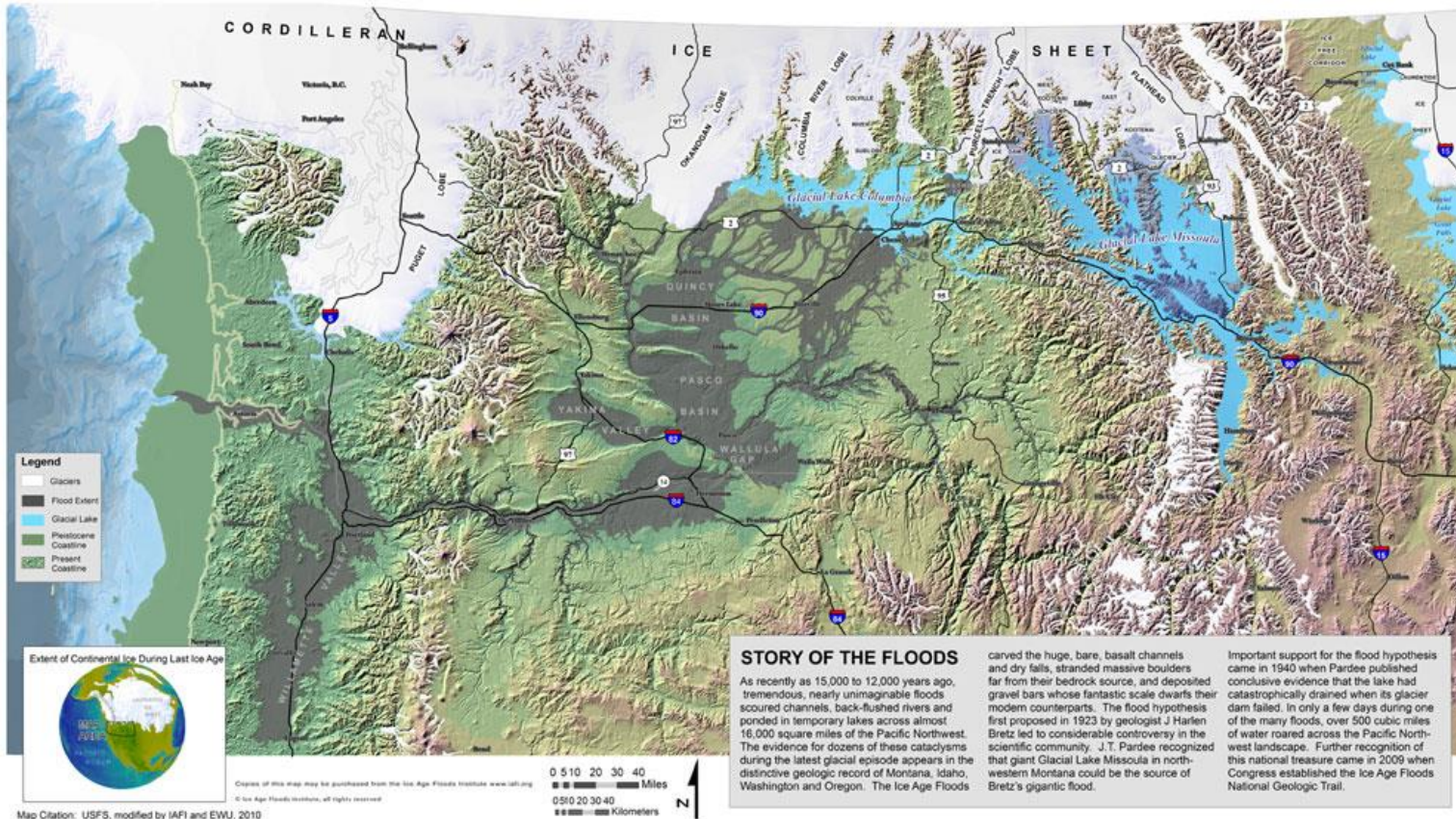
Deep Past to Human Use of the Coast



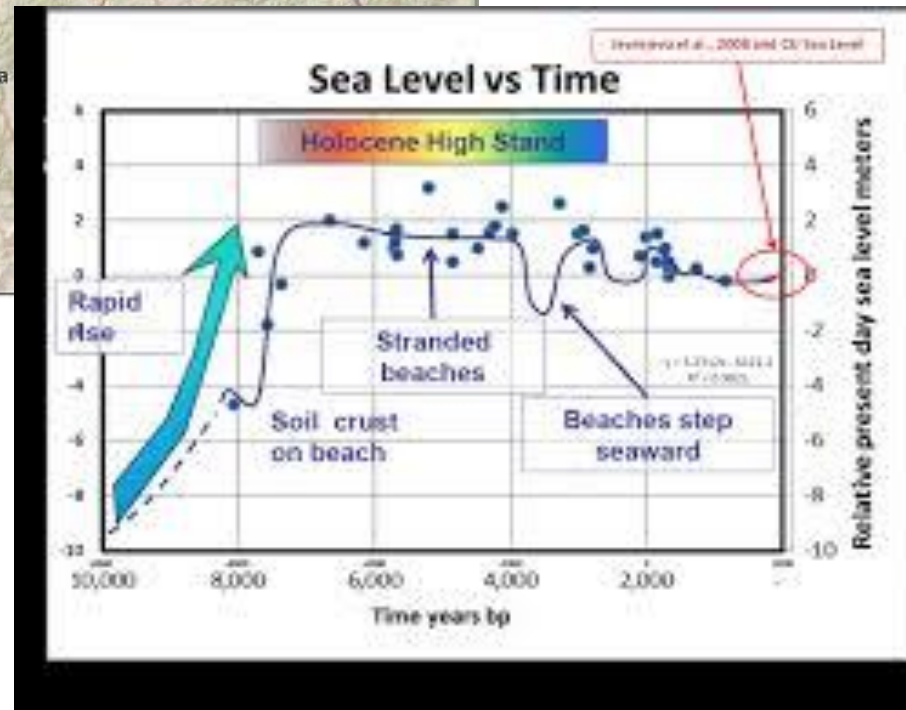
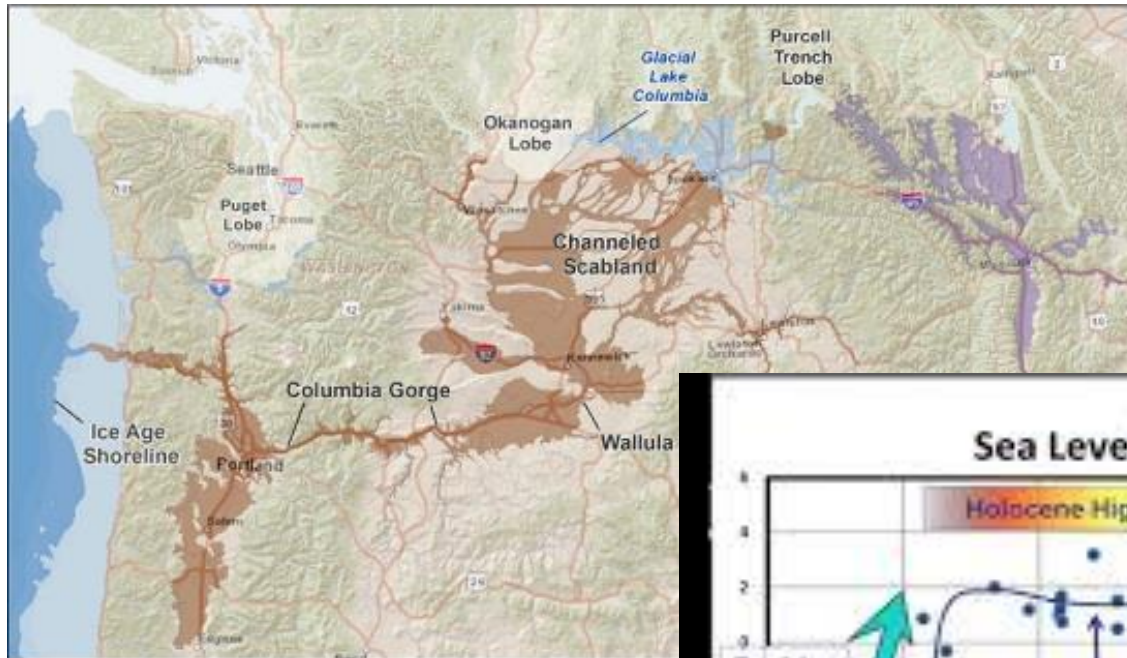
Coast/Shoreline has dramatically Changed over Time



Ice Age Floods in the Pacific Northwest.



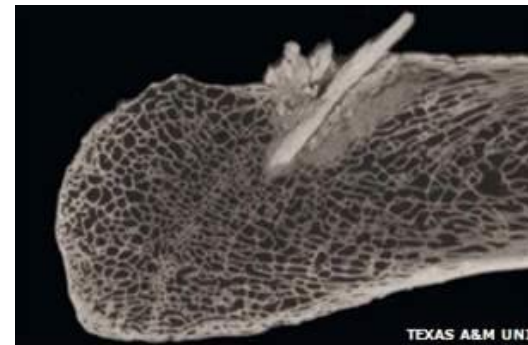
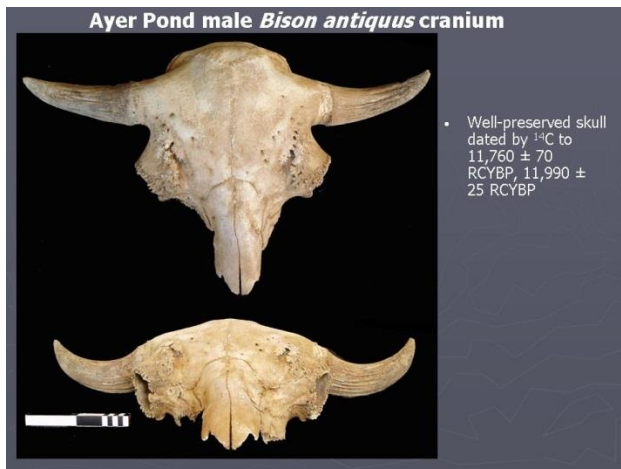
Sea level Change



Deep Human Use



Human Occupations in Washington



Archaeological Sites



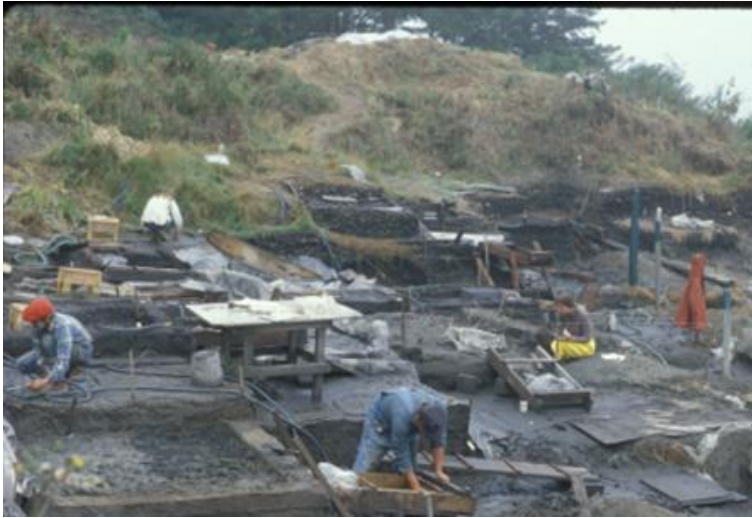
Archaeological Sites



Archaeological Sites



Archaeological Excavations & Artifacts



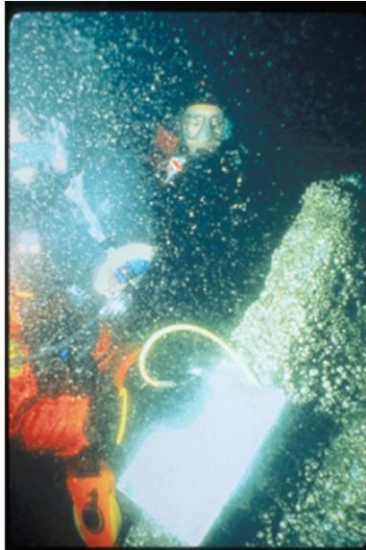
Archaeology to Historic Tide



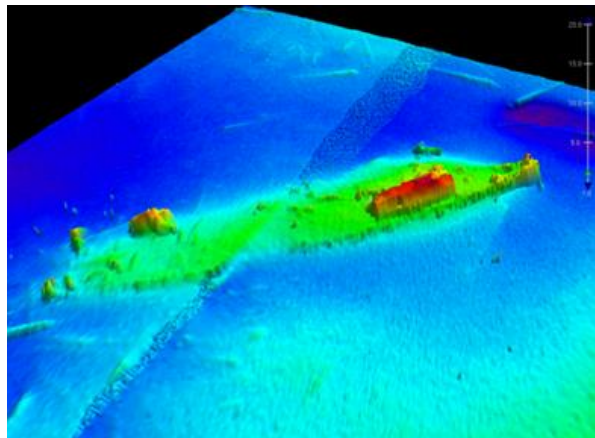
History is Diverse



The Past is Present on the Coast



History and Archaeology



ALL ABOARD!



8
7
6

Experience Washington State's Maritime Heritage Area

